



**THE OZONE**  
GROUP PHUKET

# THE OZONE OASIS CONDOMINIUM







## THE OZONE OASIS CONDOMINIUM

Enriched by the presence of the inimitable Urban Oasis Garden, The Ozone Oasis Condominium complex boasts a total of 328 units spread across 3 modern buildings. This exquisite living space offers an unparalleled experience that seamlessly blends nature's tranquility with the epitome of luxury living. Amidst this carefully crafted environment, you'll discover an array of top-tier facilities, ensuring a lifestyle that redefines opulence and comfort.

5600	
2750	2850



1220	3525	1750
6495		

# 1 BEDROOM TYPE A 36 SQ.M.







**1 BEDROOM TYPE B**  
40 SQ.M.







**1 BEDROOM TYPE C**  
48 SQ.M.







11150		
3050	4000	4100



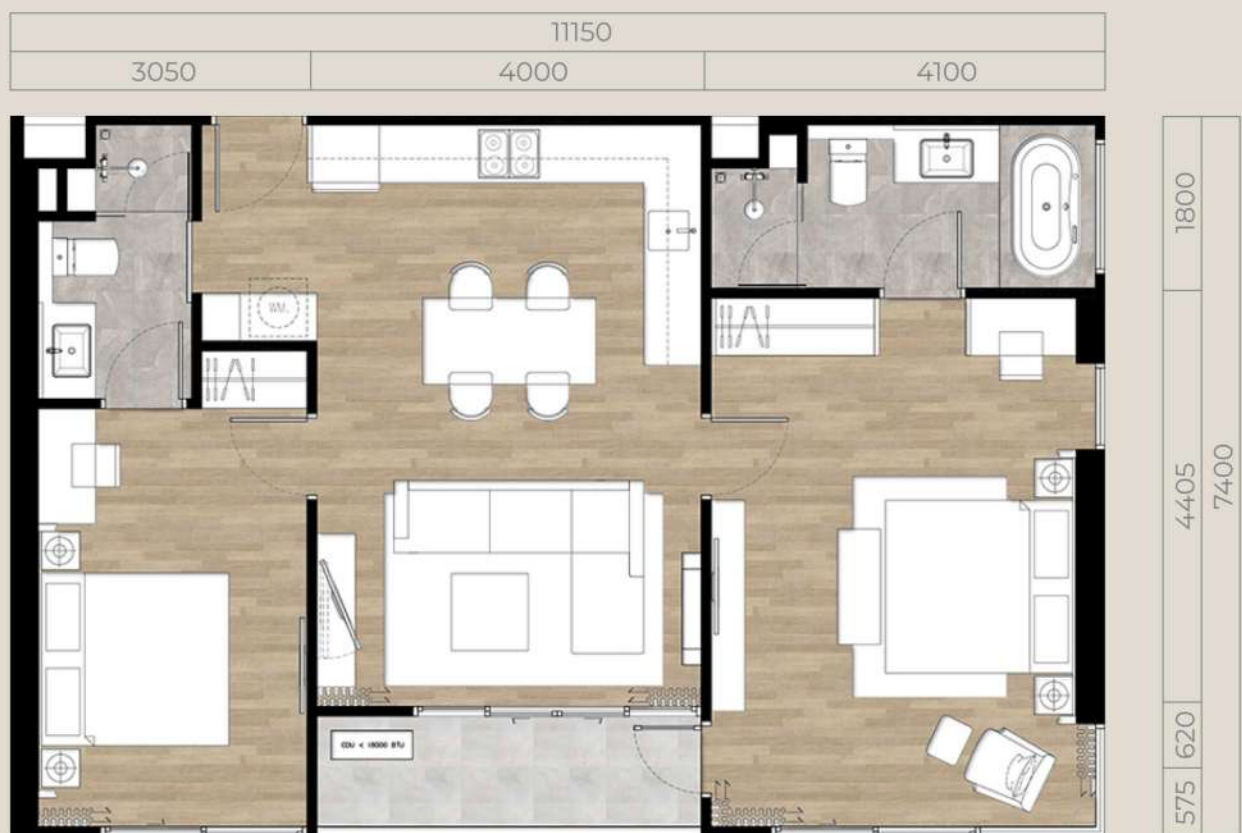
1020	3675	1800
6495		

## 2 BEDROOM TYPE A

72 SQ.M.







**2 BEDROOM TYPE B**  
81 SQ.M.





14450					
2750	4100	500	2100	3850	1150



## 3 BEDROOM

122 SQ.M.







# FACILITIES

The Ozone Oasis Condominium offers exceptional recreational options, highlighted by the breathtaking Oasis Garden, two premium tennis courts, a jogging track, a delightful kid's entertainment park & playground, and convenient pavilions for gatherings, all strategically positioned as central focal points. Additionally, there are cutting-edge gyms, and expansive 35-meter swimming pools. Residents can also relish panoramic views of the stunning Laguna Golf Course from upper floors.





THE MOST-SOUGHT-AFTER

# LOCATION

Laguna Golf Course	1	k.m.
Boat Avenue Shopping Mall	1	k.m.
Central Porto De Phuket	2	k.m.
Bangtao Beach	2	k.m.
Layan Beach	2	k.m.
Blue Tree Waterpark	3.5	k.m.
Maya Beach Club	4	k.m.
Catch Beach Club	5	k.m.
Thanyapura Sport Center	10	k.m.
UWC International School	10	k.m.
Blue Canyon Golf Course	14	k.m.
Bumrungrad International Hospital Phuket	14	k.m.
Phuket International Airport	16	k.m.

An ideal choice for those seeking a family home, a wise investment,  
or a peaceful holiday escape that goes beyond the ordinary.



**THE OZONE  
OASIS CONDOMINIUM**